

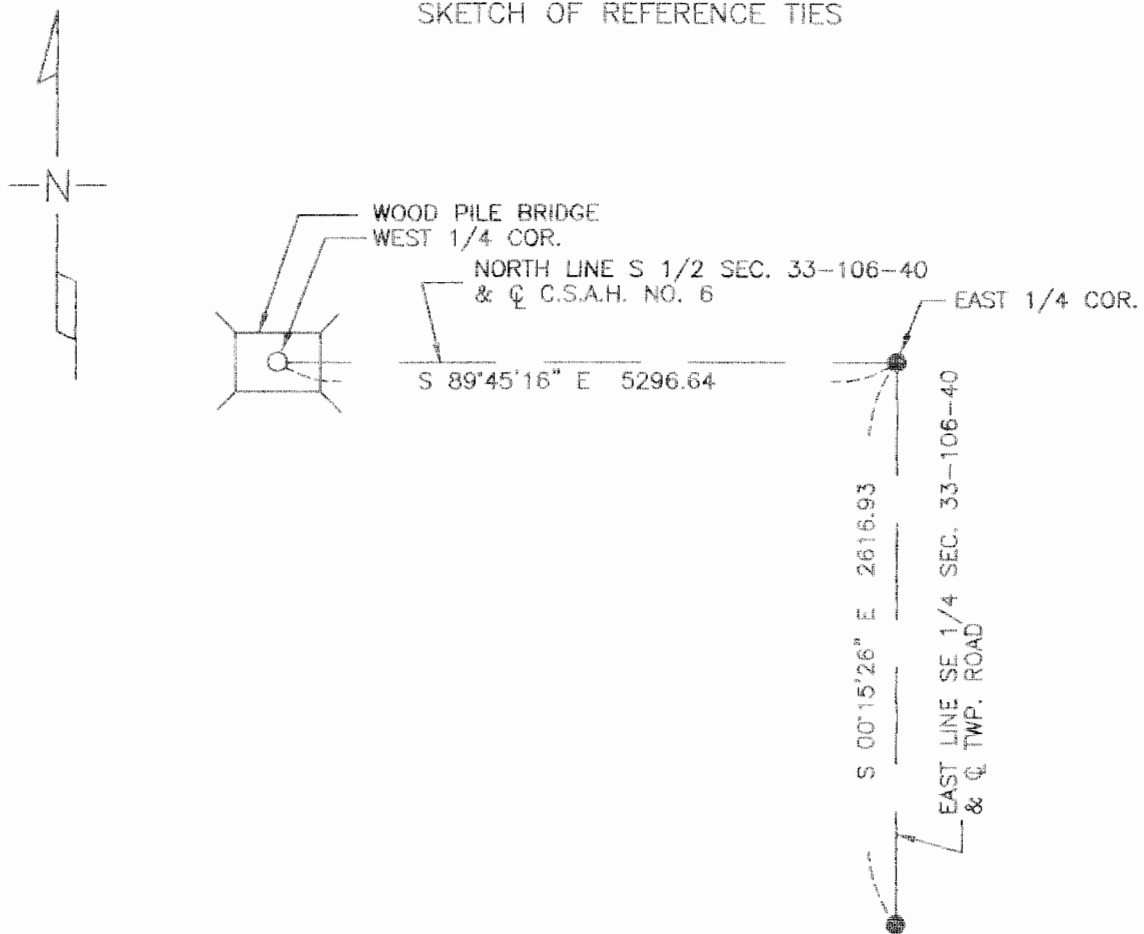
# CERTIFICATE OF LOCATION OF GOVERNMENT CORNER

EAST 1/4 Corner of Section 33, Township 106, Range 40, 5th P.M.  
 STATE OF MINNESOTA, County of MURRAY

At the corner location shown on the sketch

- On 8-11-00 found a 6" STONE 15" BELOW SURFACE OF ROAD
- left monument as found     lowered monument,     removed monument (explain)
- On 8-11-00 placed a 1" IRON PIPE WITH SURVEY CAP NO. 23008 OVER STONE

## SKETCH OF REFERENCE TIES



Statement of evidence relative to this corner location is on back of page.

I hereby certify that this document and the data contained herein was prepared by me or under my direct supervision.

Perry L. Zieske  
SIGNATURE

9-20-00  
DATE

MN. REGISTRATION NO. 23008

- Land Surveyor,     Professional Engineer
- County Surveyor,     County Engineer

OFFICE OF THE COUNTY RECORDER

I hereby certify that this document was filed in the Co. Recorder's Office at \_\_\_\_\_ on the

\_\_\_\_\_ day of SEP 22 2000

County Recorder Jane V. Johnson  
By \_\_\_\_\_, Deputy

DOCUMENT NO. \_\_\_\_\_